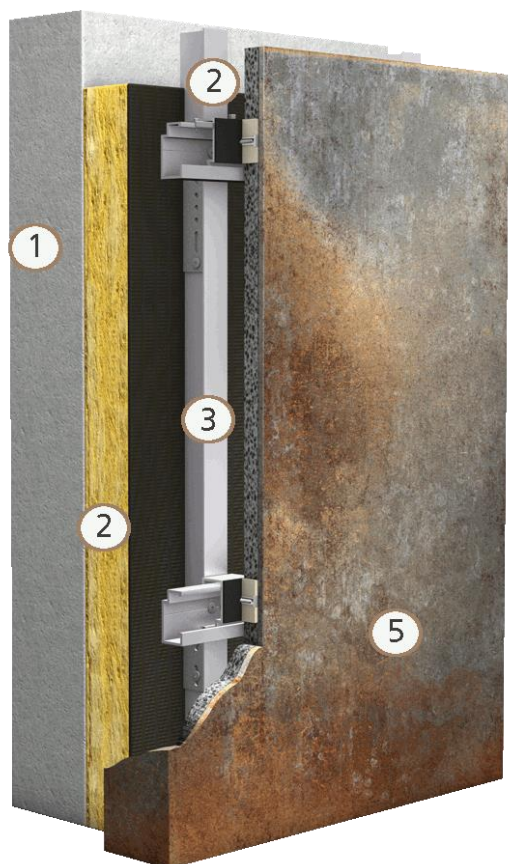




System Information
Airtec Ceramic



System Design

1	Wall
2	Mineral wool insulation panel
3	Two piece aluminium support structure
4	Horizontal rail and panel clip
5	AIRTEC Ceramic surface finish

Extension to the General Building Inspection approval Z - 33.2-632, pending

Max. panel size of 3.200 x 1.500 mm or 3.600 x 1.200 mm, dependent on colour and surface design

Fire classification B1 to DIN 4102-1, pending

Panel thickness ca. 25 mm

Joint width Recommended 8 mm

Tolerance

Width/Length: ± 1 mm
Flatness: ca. 3 – 4 mm/m
Panel thickness: 25 mm ± 1 mm

- Ventilated Ceramic Facade with invisible fixing
- Extension of the Building Supervision approval Z - 33.2-632, applied for
- Panel weight ca. 34 kg/m²
- Fire classification DIN 4102-1 – corresponds to B1
- Exceptional formats with panel sizes up to 4,8 m²
(max. 1,50 x 3,20 m or 1,20 x 3,60 m, dependent on Design)
- Overhead installation (max. 1,30 x 3,60 m)
- High degree of flexibility through individual design features
- Highest flexural strength due to sandwich construction
- Maximum resistance to impact with no release of fragments
- Ideal for new build, refurbishment and listed facades
- Factory production that is not weather dependent and allows fast installation
- Easily combined with other Airtec facade systems (such as Airtec stone and glass)



System Design

See Alsecco Airtec system details for current status

Fixings	Adjustable panel clips attached to the top row to facilitate alignment and carrying the dead load. All other fixed clips to resist wind loading.
Criteria for fixings	Panel sizes up to 1m ² = 4 fixing points (dependent on dead load and specifications in approval) > 1 m ² Panel size = according to approval
Max.Panel size	Panel sizes of 3.200 x 1.500 mm or 3.600 x 1.200 mm, dependent on colour and surface design
Panel thickness	Panel thickness of approximately 25mm, 19mm lightweight concrete backing and a 6mm ceramic plate bonded to the backing
System design	Wall construction + insulation thickness to acheive U value. 25mm ventilation gap + 32mm horizontal rail and clip. 25mm Airtec ceramic panel

Required information for non binding budget quotation:

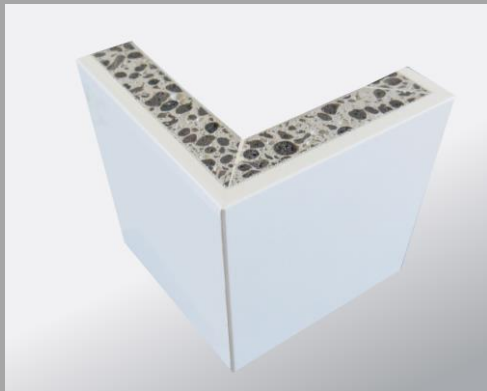
- Construction drawings for the building with at least dimensioned plan and section views
- Information for the supporting substrate
- Panel formats, design, colour and quantities
- Special formats, shapes, connections, cut outs and hole design requirements

Architectural elements / 3D AIRTEC Ceramic shapes

The use of Airtec 3D shapes is a great opportunity for architects and designers:

The special material properties of the ceramic composite plate make moldings which act as if they are cast from one mold and have a significantly reduced dead weight. Thus, monolithic three-dimensional moldings such as corners, angles or U-shapes can be produced.

For this purpose, the composite panels are first cut to mitred joints and adhesively bonded without a visible joint. Freestanding returns up to a width of 250mm can be made without additional support structure.



Selectable colour and surface finish from the brochure

Layout

- Monolithic shapes for the desired architectural design
- Panel sizes up to 4,8 m²
- Visible edges to give a solid appearance
- Soffit panels possible
- 3D visual Facade

Architectural design Architectural freedom to design bespoke facades

Panel sizes

Panel size of 3.200 x 1.500 mm or 3.600 x 1.200 mm, dependent on the colour and design of the surface.

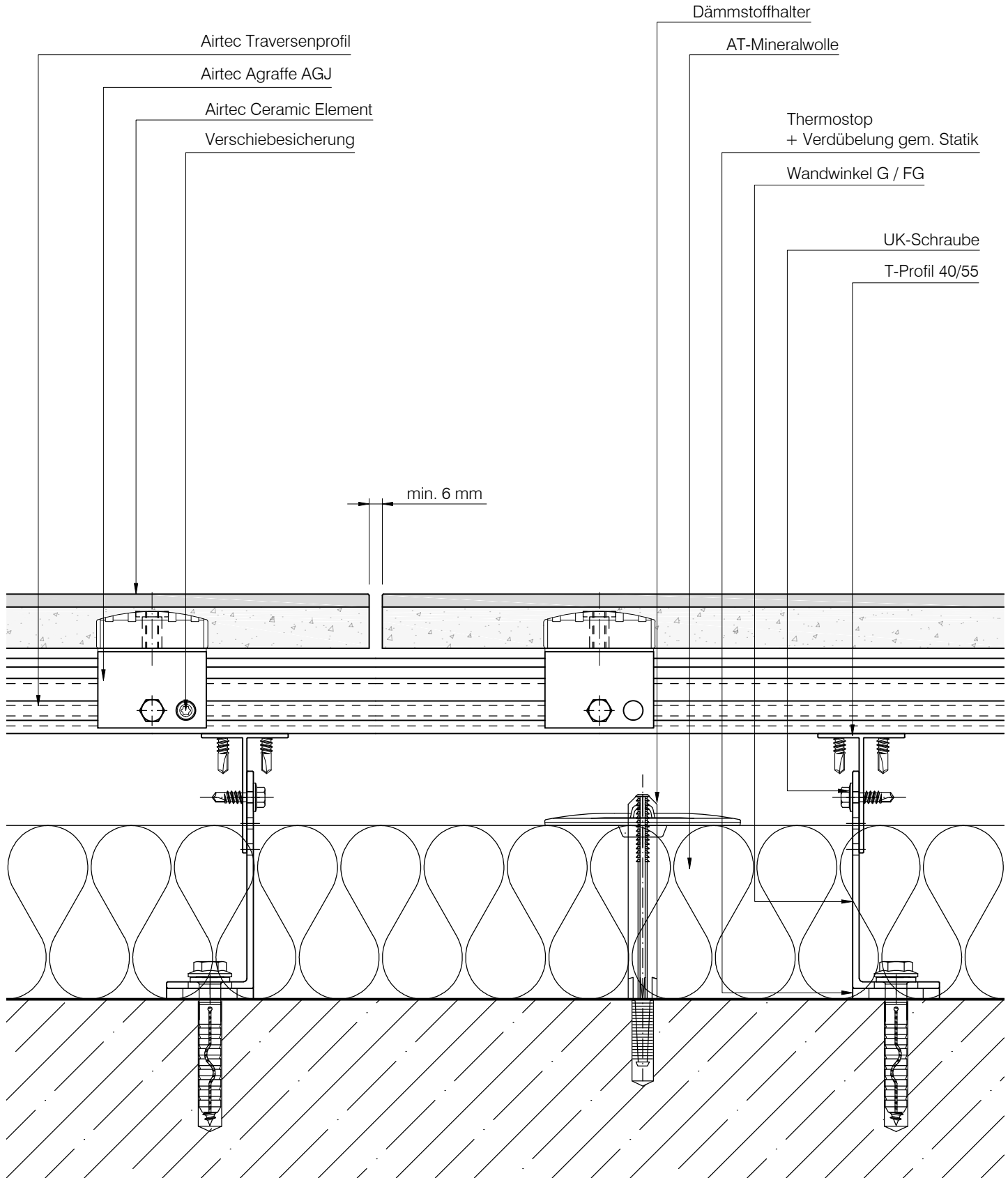
Connections

Corner, reveal and lintels can be connected to the main up to 250mm without the need for additional support.

Visible edges

Visible edges can be created on all sides to give a monolithic appearance

Your vision made into reality

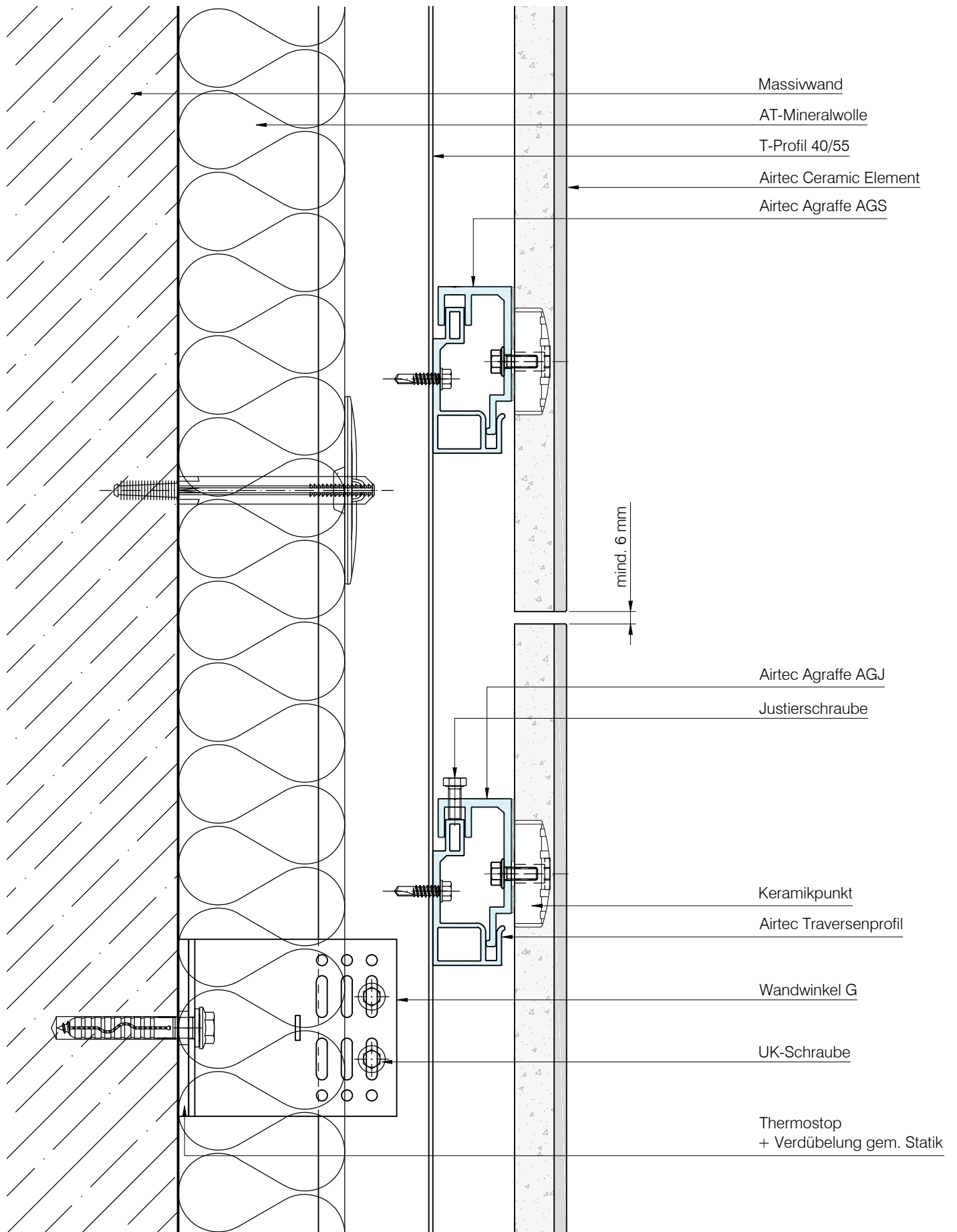


DAW SE
 Geschäftsbereich LITHODECOR
 Ostwaldstraße
 D-99834 Gerstungen
 Tel. (036922) 88 400
 Fax. (036922) 88 202
 www.lithodecor.de • info@lithodecor.de

Objekt:	Standard - Detail
Bauherr:	-

System:	Airtec Ceramic
Materialien:	Keramik

Blatt Nr.:	L6-0110	
Gez.:	J. Cebula	Index: A
Datum:	25.05.2018	Maßstab: 1:2,5

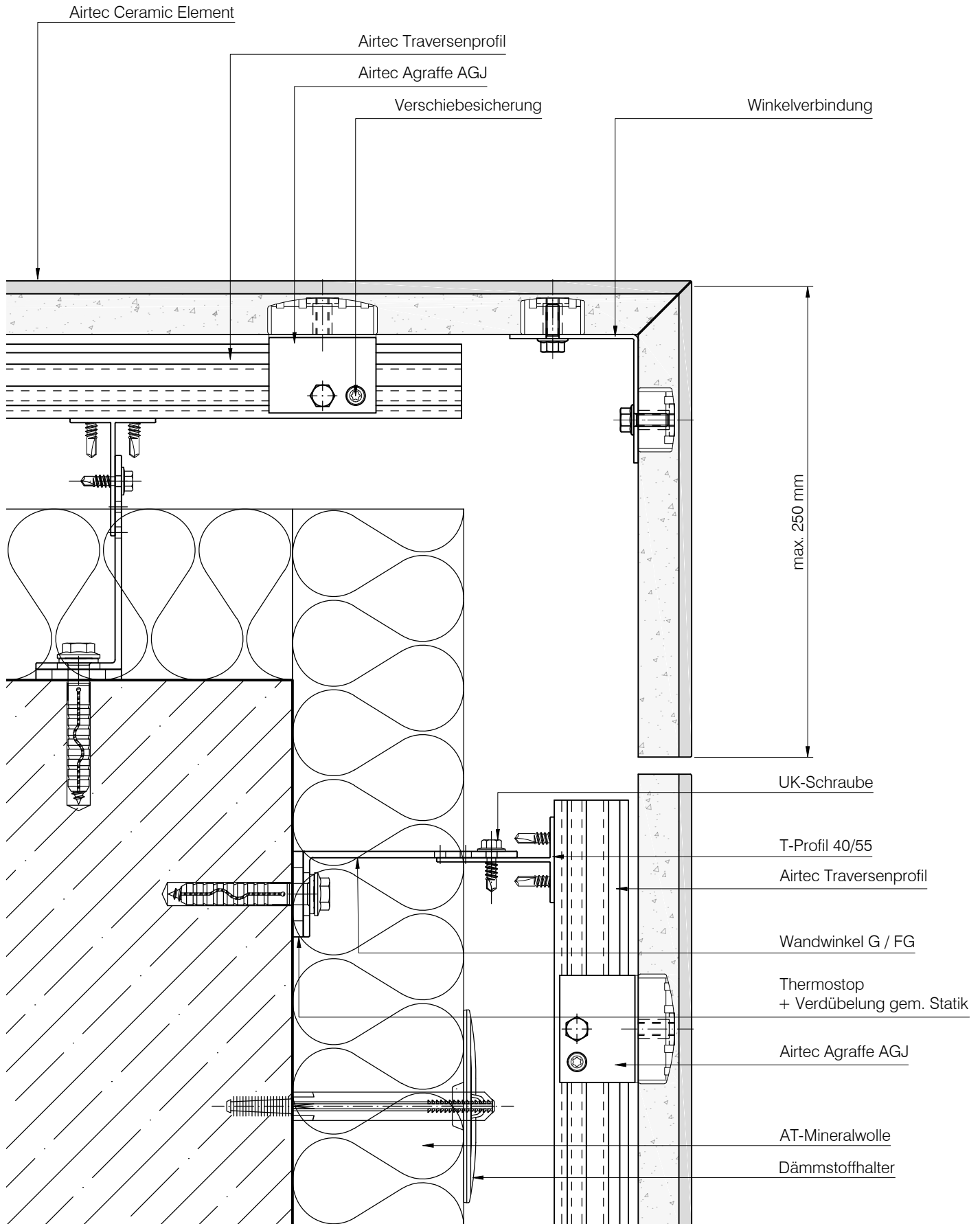


DAW SE
 Geschäftsbereich LITHODECOR
 Ostwaldstraße
 D-99834 Gerstungen
 Tel. (036922) 88 400
 Fax. (036922) 88 202
 www.lithodecor.de • info@lithodecor.de

Objekt:	Standard - Detail
Bauherr:	-

System:	Airtec Ceramic
Materialien:	Keramik

Blatt Nr.:	L6-0210	
Gez.:	J. Cebula	Index: A
Datum:	25.05.2018	Maßstab: 1:2,5



DAW SE Geschäftsbereich LITHODECOR Ostwaldstraße D-99834 Gerstungen Tel. (036922) 88 400 Fax. (036922) 88 202 www.lithodecor.de • info@lithodecor.de	Objekt:	Standard - Detail	System:	Airtec Ceramic	Blatt Nr.:	L6-0310		
	Bauherr:	-	Materialien:	Keramik	Gez.:	J. Cebula	Index:	A
					Datum:	25.05.2018	Maßstab:	1:2,5