



BASIC 4. MELDORFER

SYSTEM INFORMATION



BASIC 4

M21 EXTERNAL INSULATED RENDER SYSTEM

To be read with preliminaries/general conditions. To be read in conjunction with approval certificates, technical data sheets and application guidelines

Type(s) of Coating	alsecco Systems:	alsecco external wall insulation system - adhesive and mechanical fixed. Must be applied in strict accordance with the manufacturer's written recommendations by a contracting partner from alsecco UK Ltd's current list.
---------------------------	-------------------------	--

	Proprietary Render:	alsecco 'Basic 4' EWI system - adhesive and mechanical fixed.
--	----------------------------	---

Manufacturer and reference: alsecco systems are manufactured by alsecco GmbH & Co. KG, Wildeck, Richelsdorf, D36208, Germany. UK Office: alsecco (UK) Ltd, Whitebridge Way, Stone, Staffs, ST15 8JS Tel: 01785 818998 Email: technical.support@alsecco.co.uk.

System Materials & Components:	In all cases, substrate should be deemed fit for purpose prior to the application of alsecco External Wall Insulation	
---	---	--

Location:	Example
Substrate:	Masonry (Low rise)

1.1 System Components:	Sub Primer:	Sub Primer HT/P where required
	Adhesive:	Armatop MP
	Insulation Type:	Expanded polystyrene (graphite enhanced)
	Thickness:	100mm
	'U'-Value:	TBC
	Basecoat:	Armatop MP (3-5mm) and reinforcing Mesh 32 - Meldorfer
	Top Primer:	Not required

1.1.1 System Finish:	Brick Slip/Flex:	Meldorfer with Bonding Mortar AF adhesive
	Additional Finishes:	

1.2 Accessories:	Base Rail:	A105
	Stop Beads:	W105
	Corner Beads:	3707 PVC Corner Bead With Mesh
	Mechanical Fixing:	CFIX 135
	Fire Fixing:	FF DMH 8/165 E + DMT 85/7E
	Dammflex:	Yes
	Sealing Strip 13/2:	Yes
	APU Bead:	No
	PU Foam:	Yes
	PU Flex:	Yes
	Disbon Primer:	Only where exposed steel is present
	Balcony Drip Bead:	No
	Expansion Joints:	Required only where present in substrate

Notes: Preparation of existing surfaces: Ensure existing substrate is clean, sound and free from all adhesive reducing residue/surface contaminants. Refer to recommendations of BSEN13914-1:2016 including annex B. Bond tests/Sample area recommended prior to complete application. Ensure existing rendered substrates are sound and suitable to receive additional weight of new render, existing render should be hammer tested before installation of new system to identify any loose, de-bonded or otherwise defective render and where required, repaired by others, prior to the system being installed. Lam90 - Lamella Fire Breaks required to be installed in line with section 2.8 Sub primer P is required to all existing painted substrates. Sub Primer HT is to be used on all exposed masonry

FF - Fire Fixing must be applied through the system mesh at a rate of 1 per m2 above the second storey. (Please see technical detailing for installation).

All fixings subject to pull out testing & Wind load calculations.



BASIC 4

Material & Component		
	1.3 Base Rail:	Aluminium horizontal base rail 2m long. (For Reference, see Section 1.2.) Base rails shall be fixed to substrates with zinc coated carbon steel hammer-drive fixings (minimum 6mm diameter, shank 60 - 80mm long) and to wooden substrates with panhead or washer-head stainless steel wood screws (minimum 32mm long). Spacing of fixings to be maximum 300mm centers. Contractor to ensure that system complies with CP3: Chapter V: Part 2: 1972 in relation to its structural stability.
	1.4 Substrate Primer:	In accordance with Section 1.1.
	1.5 Adhesive:	In accordance with Section 1.1: Mixed with clean water only.
	1.6 Insulation Board:	i: Expanded Polystyrene (EPS) Board to BS EN 13168. Flame Retardant to Euroclass E. ii: Thickness shall be as indicated under Section 1.1. iii: EPS Board shall be aged, prior to cutting, by air drying for 6 weeks or equivalent kiln drying. iv: Maximum size of EPS Boards shall not exceed 1200 x 600mm v: EPS Boards shall exhibit minimum 80% bead fusion and physical properties according to BS3837 Part 1 2004.
	1.7 Fire Barriers:	To comply with the recommendations of the BRE, horizontal Fire Barriers require to be placed at every floor level above 2 stories. (Ground/first Floor interface does not require these barriers). These barriers comprise of 1000 x 200mm Rock fibre Lamella Panels, applied in a continuous strip around the building. All fire barriers must be double meshed with an overlap of 200mm above and below the barrier (where applicable.)
	1.8 Beading:	Provide beads and stops at all external angles and stop ends except where detailed otherwise. See section 1.2 for Reference.
	1.9 Reinforcing Coat:	In accordance with Section 1.1 mixed with clean water only.
	1.10 Reinforcement:	Reinforcement shall be specified alsecco reinforcing mesh as per section 1.1 & clause 1.9 with symmetrical interlaced glass fibre made from twisted multi-end strands, coated to provide a high resistance to alkali attack and is manufactured so as to prevent laminar movement and deformation. In accordance with the appropriate details, Panzer mesh or Armatop Carbon Fibre with Carbon mesh can be used in areas at risk of impact damage.
	1.11 Topcoat Primer:	In accordance with Section 1.1.
	1.12 Topcoat:	In accordance with Section 1.1.
Execution	2.1 	All installation of alsecco materials in the UK shall be performed by alsecco contracting partners. Under no circumstances shall any of the alsecco products be altered with any additives, except for small amounts of clean water as directed on the label.



BASIC 4

2.2	If required, apply alsecco sub primer to substrate. (See section 1.1 for reference.) All substrate must be free of loose particles, dusting, grease and oils or any adhesion reducing substances.
2.3	If required, a fungicidal wash must be applied.
2.4	All exposed metal work that is to be covered by alsecco EWI systems to be coated with an appropriate primer e.g. Disbon or similar and left to dry prior to EWI application.
2.5	If substrate is of poor alignment and levelling is required, the installing party should use a sand & cement render or equivalent by others. Not suitable for lightweight or AAC Blockwork. Note; all parge-type coats are to be fully cured prior to alsecco materials being applied.
2.6	Align base rail and fix with alsecco anchors spaced at a maximum of 300mm apart - ensure that the base rail is not distorted. Insert base rail connectors at all rail joints. Corners should be made with mitred cuts, or an alsecco pre-formed corner section. Level and line can be adjusted using alsecco spacers available in a range of sizes
2.7	Mix alsecco adhesive mortar and apply to back of Insulation board using spot and continuous dab method. The adhesive mortar must cover at least 50% of the board/substrate unless detailed otherwise. (Typically dab and 3/No. Spots per board). On flat and even substrate, the tooth bed method of application can be used. 100% of board/substrate must be covered when using the tooth bed method of application with Insulation board. On substrates where mechanical fixings are not required, the tooth bed method must be used.
2.8	The Lamella Mineral Wool Fire Barriers are fixed at the desired position and are applied with 100% adhesive mortar. This is then fixed with stainless steel mechanical fixings at a maximum of 400mm centres. The reinforced basecoat must have additional reinforced mesh applied, above and below the Firebreak barrier, overlapping by 100mm.
2.9	Ensure that all insulation board edges are clean and free of adhesive mortar. All joints must be staggered, min 200mm (see Fixing Layout Detail); additional cutting may be required around doors and windows to ensure that board joints do not correspond with corners of openings. Fit the insulation boards tightly and bed well. Any open joints between insulation boards up to a max width of 10mm must be closed with a strip of insulation board or PU foam - NOT adhesive mortar or render.
2.10	Allow approx. 12 to 72 hours drying time for Alsecco adhesive mortar, depending on type of adhesive mortar and weather conditions. Subsequent rendering, mechanical anchoring or finishing work on insulation boards must not be carried out until adhesive mortar has set and not before 24hrs.
2.11	Mechanical fixings (if required) as specified in Section 1.2 are specified according to board thickness and substrate. Anchors should be fixed in accordance with the manufacturer's instructions and alsecco fixing requirements. (See Fixing Layout Detail)



BASIC 4

	2.12 	Rasping of the EPS Board surface must be carried out over the whole surface to achieve a smooth, even finish, prior to application of a reinforcing coat. For curved wall applications, rasping must achieve a smoothly curved surface with no visible faceting or unevenness.
	2.13 	Install Propriety alsecco sealant in conjunction with detail drawings. (See Section 1.2)
	2.14 	Corner bead and any additional beading as specified in Section 1.2 to be secured to insulation boards with alsecco basecoat render at corners and align until plumb.
	2.15 	All beads should be cut neatly, mitres formed at return angles and sharp edges, swarf and other potentially dangerous projections removed. Fix securely, using the longest possible lengths, plumb, square and true to line and level, ensuring full contact of wings with background. After coatings have been applied, remove coating material while still wet from surfaces of beads/stops, which are to be exposed to view.
Execution	2.16 	Apply alsecco basecoat render (as specified in Section 1.1) to the fixed insulation boards using a stainless steel trowel. Level out using a plasterer's straight edge or by combing through with a 10x10 tooth trowel. Float specified reinforcing mesh (see Section 1.1) into the top of the basecoat render, ensuring a minimum horizontal and vertical overlap of 100mm for the glass mesh. All corners at openings must be additionally reinforced with 250 x 250mm mesh strips embedded diagonally into the wet basecoat render. Immediately trowel the mesh into the basecoat while still wet and smooth off to finished thickness using a stainless steel trowel. For optimum strength, the mesh must sit in the top one third of the basecoat. Leave basecoat render to set for at least 2 to 3 days before applying alsecco topcoat renders. Adjoining areas of EPS insulation and Extruded Insulation must have an additional strip of reinforcing mesh applied within the basecoat with a minimum 200mm overlap.
	2.17 	This document does not replace the recommendations of our installation guidelines and technical literature. Further clarification by alsecco UK Ltd is advised prior to specifying.
	2.18 	Prior to the application of topcoat, all scaffolding boards should be cleaned to ensure minimum dirt being transferred onto the finished topcoat. The topcoat is a finishing trade, work sequencing should ensure that no or very minimum work is carried out onto the render after application of topcoat. Where scaffold plugs are to be retained, appropriate scaffold ties to be used in accordance with system details.
	2.19 	Apply specified topcoat render (see section 1.1) using a stainless steel trowel and immediately create the desired effect using a plastic finishing trowel. Drying time of topcoat render is approximately 1 to 2 days (weather dependant).



BASIC 4

2.20 |

The topcoat render, is applied in accordance with the following general rules:

A: Using a clean, rust-free low speed mixer, thoroughly stir the alsecco finish to a uniform consistency.

B: Finish shall be applied in a continuous application always working to a wet edge. Care should be taken to avoid texture changes at different levels. To prevent staining of the finish coating, always ensure that the scaffold boards are free from dust before commencing application of the final coat. If possible, entire sections or elevations should be coated in a single operation to avoid joint marks in the finish. Often this can be achieved by working to natural breaks in the building or changes in colour or texture. Where day-joints are unavoidable these should be made to coincide with natural features such as a line of window cills.

Apply a masking tape at the desired position of the joint and apply the finish overlapping the edge of the tape. Carefully remove the tape while the finish is still wet to leave a fair edge. Once the finish material has set subsequent applications may be applied by masking the previously completed section with tape and carefully applying the new finish to achieve a barely visible joint.

C: Only in situations where mineral renders (Miratect & Alsilite) are to be used, irregular shading and patching due to uneven drying cannot always be avoided. Evenness of colour can be achieved by applying ALSECCO Equalising finish.

D: Weather conditions will be a factor in the application of the finish as well as the drying time.

E: An option for areas of high salt-water attack, a final coat of alsecco Alsicolor Quatro can be applied.

Execution

2.21 | Ashlar Formers

If Ashlar formers are required, the insulation is to be routed out with the alsecco routing tool. With the Ashlar now formed, a thin coat 1-2mm of Armatop MP basecoat should be applied into Ashlar groove, with care being taken to cover all internal angles. A layer of alsecco Ashlar pre-formed Detail Mesh should be inserted into the Armatop MP, using an alsecco Detail Trowel, which will ensure a sharp contour of the Ashlar effect being maintained. The mesh should be extended 100-200mm onto the front surface of the basecoat and feathered in. Basecoat to be finished with No. Coats of ALSECCO Quatro Finish.

2.22 | Brick Slips

(In conjunction with Section 1.1) Incorporate vertical expansion joints in the brickwork and tile coursing by introducing a flexible joint compound in place of the pointing or grouting mortar. Vertical joints to brickwork should follow the brick bond line. Joints should correspond with window or door opening or approx. every 3m vertically for dark coloured finishes or 6m vertically for light coloured finishes. In accordance with BS5628 : part 3 1985 Use of masonry.

2



BASIC 4

2.23 | Brick Slip Flex

(In conjunction with Section 1.1) Use a trowel to apply the Bonding Mortar AF to the basecoat and a notched trowel (4 x 6 or 5 x 5mm) to comb through the adhesive in a horizontal direction to create a ridged bed. Place the brick slip flex on top of the open adhesive, leaving a joint width in between and press into position. Use a damp brush to smooth the adhesive over in the area of the joint before the adhesive has set. Ensure a close connection between the adhesive compound and the brick slip flex. Only apply as much adhesive as can be covered with brick slip flex before a skin is formed.

2.24 | Render Brick

(In conjunction with Section 1.1) After the basecoat has had a minimum 24 hours drying time, apply an additional Intermediate Mortar Coat layer, 2mm thick. (Intermediate Mortar Coat consists of Spardash DLX - Colour to match Basecoat.) This is used to form the Mortar Joint. Immediately apply, wet on wet, a 2-3mm thick layer of decorative render brick topcoat. (Consisting of Spardash DLX - Colour as requested.) Give these layers 8-16 hours drying time. Using a straight edge with a joint cutting tool, scrape out the brick profiles, cutting through the topcoat & intermediate coat, back to the hard basecoat to form the mortar joint. NOTE: If top layer of render brick is of dark colouring, lime bloom will occur. To prevent this, a wash of alsecco Hydrophobic MI agent must be applied once all coats are dry. (Technical Data Sheet available upon request.)

2.25 | Deco Profiles

(In conjunction with Section 1.1)

A. On External Wall Insulation Systems, the decorative Profiles must always be applied to finished reinforcement layers with the appropriate reinforcing mesh. The profiles to be applied to the façade must be measured out and marked according to the installation plan. For window cill profiles alignment is made with the centreline of the window/window sill profile.

B. Profiles are cut to size using a hacksaw with a carbide blade and a mitre block.

C. Profile adhesive applied to both substrate and back of the profile. Profiled applied in accordance with details. Profile is firmly pressed onto substrate using a straight edge and can be propped to prevent slipping.

D. Smooth off all excess profile adhesive, once all joints are fully sealed.

E. All profiles, which are not tightly butt-jointed, must be installed with 10mm spacing. Allow 24 hours for adhesion before filling the joints with alsecco Polyurethane Foam. Once hardened, Polyurethane foam scraped out to a depth of 10mm and void filled with alsecco Dammflex Sealant.

F. Apply profile adhesive with a specific trowel to smooth out window reveals. Any trowel marks to be ground down. Accurate edges achieved by installing the Deco Profiles 2mm above the window level of the window reveal towards the centre of the window. Protruding profile edges allow for sharp edged reveals.

G. Window cill reveals must be insulated to accept window sill profiles. Care must be taken to ensure that the inclination of the window cill is in line with that of the window sill profile. This connection with the window frame must be sealed with an alsecco sealing system. Once the window sill profiles have been installed, apply profile adhesive to the horizontal surface, apply alsecco glass fibre mesh 32 and trowel over with sufficient mortar to cover the mesh. Profiles coated with two coats of Alsicolor, Si façade or Hydro Equalising finish in the desired colour.



BASIC 4

Protection and Cleaning	3.1 	All installation of alsecco materials in the UK shall be performed by alsecco Contracting Partners. Under no circumstances shall any of the alsecco products be altered with any additives, except for small amounts of clean water as directed on the label.
	3.2 	All plasters described should never be applied if ambient and surface temperatures cannot be kept above +3°C for mineral products, +5°C for acrylic and silicon products and +1°C for ice products during application and drying period. Prior to installation, the wall shall be free of residual moisture. The stored material should be protected from frost and strong sunlight.
	3.3 	Although it is preferable when working with highly pigmented renders to mask or protect other building elements such as windows, sills, etc., spilled or dropped materials may be removed easily from most surfaces with a wet sponge or cloth before the material has dried out. Renders which have been allowed to partially dry may be removed by using a soap solution to soften the render and warm water to clean the surface. Absorbent surfaces such as concrete, brick, etc. may be affected by the pigments of the render and where spillage is likely then these surfaces should be protected with appropriate covering material.
General Comments	4.1 	Remove efflorescence, dust and other loose material by thoroughly dry brushing. Remove all traces of paint, grease, dirt and other materials incompatible with coating by scrubbing with water containing detergent and washing off with plenty of clean water. Allow to dry before applying coatings unless specified otherwise.
	4.2 (515) Keyring/Bonding	Prepare backgrounds as specified for the type of coating to be applied. Methods other than those specified may be submitted for approval.
	4.3 (573) Treatment of organic growths	Biocides must be approved and registered by the Health and Safety Executive (HSE) and listed in the current 'Reference Book 500', as surface biocides.
	4.4 (810) Application Generally	Apply each coating firmly to achieve good adhesion and in one continuous operation between angles and joints. All coatings to be not less than the thickness specified firmly bonded, of even and consistent appearance, free from rippling, hollows and ridges. Finish surfaces to a true plane, to correct line and level, with all angles and corners to a right angle unless specified otherwise, and with walls and reveals plumb and square. Prevent excessively rapid or localised drying out. The standard of finish shall meet the requirements of BSEN 13914-1: 2005 NA.15 assessment of external rendered finishes alsecco would recommend where possible that the variation in gap under a 1.8m straight edge (with feet) placed anywhere on the surface to be not more than 3mm.
	4.5 (880) Drying	Work in the shade and out of drying winds whenever possible. Allow each coat to dry out thoroughly to ensure that drying shrinkage is substantially complete before applying next coat. the face, or other approved method.



BASIC 4

4.6 | (890) Protection

Adequately protect newly applied external coatings against frost and rain for the first 48 hours using polyethylene sheet / Debris netting hung clear of the face, or other approved method.

This document does not replace the recommendations of our installation guidelines and technical literature. Further clarification by alsecco UK Ltd is advised prior to specifying.

Example

Haftgrund P - (Sub Primer P)

Pigmented resin-bonded primer for decorative renders.



AREAS OF APPLICATION

Primer to even out colour variations and improve adhesion before applying final coat with resin renders and mineral renders.

For indoor and outdoor use.

PRODUCT PROPERTIES

- Absorbency regulating
- Water-vapour permeable
- Water-repellent
- Promotes adhesion
- Improves adhesion
- Improves the ability to texture subsequent decorative renders
- Non-slip surface because quartz filled
- Provokes ideal and economical application of the decorative render

TECHNICAL DATA

Binder base	Terpolymer resin dispersion
Specific gravity	approx. 1,7 g/cm ³
VOC value	EU limit value for the VOC content of this product (cat. A/h): 30 g/l (2010). This product contains < 10 g/l VOC.

APPLICATION INSTRUCTIONS

Substrate pre-treatment	All substrates must be stable, level, clean, dry and free of any residue, which can reduce adhesiveness. Prime substrates to be reinforced with Hydro penetrating primer.
Mixing	Ready to use Can be diluted with a max. of 20 % water.
Application	Can be applied using a brush, roller or spraying.

	Use short pile rolls for even application. It is recommended to use a primer in the colour of the subsequent textured render for unsealed textures.
Consumption	approx. 0,3 - 0,4 kg/m ² (approx. 200 - 250 ml/m ²) Determine the precise material requirements by means of a trial coating on the object.
Information about the weather	Temperatures below + 5 °C may not arise during application and drying.
Drying time	approx. 2 - 6 hours Dependent on temperature and relative humidity.
Cleaning of tools	In a fresh state with water.
Application by machine	Please request special information regarding machine processing.

STORAGE

Shelf life in original sealed packaging of at least 1 year when kept cool and protected against frost.

PACKAGING INFORMATION

Colour	Natural white and pigmented in the colour of the subsequent render
Packaging unit	PP bucket approx. 20 kg net

OTHER INFORMATION

Information on safety	The information provided in the current safety data sheet applies.
Transportation	Not a hazardous material
Giscode	M-DF02 latex paints

alsecco GmbH
Kupferstraße 50
D-36208 Wildeck
Phone 03 69 22 / 80-0
Fax 03 69 22 / 88-330
Internet: www.alsecco.de

The above information is based on many years of experience and tests and is provided by us to the best of our knowledge. Such information applies in addition to our application guidelines. However, we cannot accept any responsibility for the correctness of our recommendations on account of wide variety of substrates and of on-site conditions and applications which are outside our control. Any recommendations provided by our employees and deviating from these documents must be given in writing. We reserve right to make any changes on account of technical progress or building regulations. Your technical advisor will be pleased to provide the relevant product data sheets.



Hydro-Tiefgrund - (Sub Primer HT)

Solvent-free dispersible resin primer



AREAS OF APPLICATION

Hardening and regulation of absorbency of mineral and weathered indoor and outdoor resin-bound substrates, for walls and floors.

Suitable for brickwork, concrete, screed and mineral bound building boards.

Hardens gypsum and anhydrite bound boards, surfaces, renders/renders and screeds with an effective moisture barrier.

Also suitable for priming prior to follow-up work indoors, such as laying tiles and wallpapering as well as for all kinds of coatings.

Hardening of mealy, priming surfaces.

PRODUCT PROPERTIES

- High penetration depth because finely dispersed
- Very strengthening
- Water-vapour permeable
- Low-noise
- Absorbency regulating
- Improves the adhesion of subsequent layers

TECHNICAL DATA

Binder base	Acrylic resin dispersion
Specific gravity	approx. 1,0 g/cm ³
VOC value	EU limit value for the VOC content of this product (cat. A/h): 30 g/l (2010). This product contains < 1 g/l VOC.

APPLICATION INSTRUCTIONS

Substrate pre-treatment	All substrates must be free of oils, greases and loose particles.
Mixing	Ready to use Depending on the absorbency of the substrate, dilute the base material with

	water using a max. ratio of 1:2.
Application	Can be applied using a brush, roller or spraying.
Consumption	approx. 200-400 ml/m ² . Determine the precise material requirements by means of a trial coating on the object.
Information about the weather	Temperatures below + 5 °C may not arise during application and drying.
Drying time	approx. 2 - 4 hours Dependent on temperature and relative humidity.
Cleaning of tools	In a fresh state with water.
Application by machine	Please request special information regarding machine processing.

STORAGE

Shelf life in original sealed packaging of at least 3 year when kept cool and protected against frost.

PACKAGING INFORMATION

Colour	Opaque blue and dries transparent.
Packaging unit	PP canister approx. 10 l

OTHER INFORMATION

Information on safety	The information provided in the current safety data sheet applies.
Transportation	Not a hazardous material

alsecco GmbH
Kupferstraße 50
D-36208 Wildeck
Phone 03 69 22 / 80-0
Fax 03 69 22 / 88-330
Internet: www.alsecco.de

The above information is based on many years of experience and tests and is provided by us to the best of our knowledge. Such information applies in addition to our application guidelines. However, we cannot accept any responsibility for the correctness of our recommendations on account of wide variety of substrates and of on-site conditions and applications which are outside our control. Any recommendations provided by our employees and deviating from these documents must be given in writing. We reserve right to make any changes on account of technical progress or building regulations. Your technical advisor will be pleased to provide the relevant product data sheets.



FASSADENKOMPETENZ

Armatop MP

Adhesive and reinforcing compound for alsecco facade systems



PRODUCT PROPERTIES

- A material for insulation board bonding and reinforcement
- Weatherproof
- Water-repellent
- Highly water-vapour permeable
- Strong adhesive power on nearly all substrates
- Highly elastic
- Normal render mortar according to DIN EN 998-1

TECHNICAL DATA

Indicated fixed values represent average values, which can slightly vary from delivery to delivery due to the application of natural raw materials.

Binder base	Mineral binding agent according to DIN EN 197-1 and DIN EN 459-1 Resin dispersion powder
Apparent density of set mortar	approx. 1,4 g/cm ³ according to DIN EN 998-1
Adhesive pull strength	≥ 0,08 N/mm ² according to DIN EN 998-1
Adhesive pull strength on polystyrene	≥ 0,08 N/mm ²
Water vapour permeability μ	≤ 25 according to DIN EN 998-1
Water permeability	$w \leq 0,2 \text{ kg}/(\text{m}^2\text{h}^{1/2})$ according to DIN EN 1062
Fire behavior	A2-s1, d0 according to DIN EN 13501
Water absorption	Class W ₂ according to DIN EN 998-1
Compressive strength	Class CS IV according to DIN EN 998-1
Diffusion-equivalent air-layer thickness (3,0 mm)	$s_d < 0,1 \text{ m}$ according to DIN EN ISO 7783

APPLICATION INSTRUCTIONS

Preparation

Mask window sills and attachment parts.

Substrate pre-treatment

All substrates must be stable, dry, level (DIN 18202 or 18203), clean and free of any residue, which can reduce adhesiveness.

Pretreat substrates according to the following specifications:

Substrate	Treatment
Mineral substrates, structurally identical to new construction	Cleaning
Renders MG PII, PIII, stable, solid	None
Renders MG PII, PIII, sandy surface	Hydro penetrating primer
Stable old coats or coatings, non-chalking	Clean with high pressure water jet
Stable old coats or coatings, chalking	Clean with high pressure water jet, prime with Primer P
Unstable old coats or coatings	Remove coat/coating, Hydro penetrating primer
Mineral wool facade insulation boards	None
Polystyrene facade insulation boards, in mint condition	Remove thickness or height discrepancies by sanding, remove any accumulated dust
Polystyrene facade insulation boards, weathered	Sand down unstable area of the surface, remove any accumulated dust

Mixing

25 kg of material (one sack) in approx. 5,7 l of water.

Mix with electric mixer or compulsory mixer.

Do not mix more material than can be used within 2 h.

Application as adhesive

Prime mineral insulation boards before application of the Armatop MP in the adhesive area.

Bond according to bead-spot or buttering-floating method.

Minimum adhesive surface: 40%.

Do not apply any adhesive in the area of the joints on the insulation boards.

Never seal joints between insulation boards using adhesive but rather with



insulation strips or PU filling foam.

Install insulation boards in offset stretcher bond formation and butt together.

Bead-spot method

Apply circumferential beading bevelled to the edge of the board, to avoid adhesive being pressed into the butt and bed joints when attaching the boards.

Apply 3 - 6 adhesive dots for 0.5 m² insulation board surface.

Never fix insulation boards using spot bonding.

Buttering-floating method

Use only for level substrates.

Immediately after application of the adhesive, position insulation boards on the substrate and butt.

Mechanical adhesive application

Apply the material to the rear side of the insulation boards using a suitable mortar pump and adhesive applicator gun.

Apply the adhesive directly to the wall when using coated lamella insulation boards (Speed-Wall). Before installing the insulation boards, comb through using a notched trowel.

After application of the adhesive, position insulation boards on the substrate and butt.

Note

***ZEILENUMBRUCH*

Application as a reinforcing layer

Installing corner rails or mesh corner beads

Before reinforcing, place completely into Armatop MP and align.

Corner rail 9078, corner rail 1031, aluminium corner rail with mesh and corner rail KU with mesh are used.

Constructing the reinforcement

Apply material mechanically or manually with a layer thickness of 3 mm .

Combing through with a 10 mm notched trowel is recommended, to check the minimum layer thickness.

Place the fibreglass mesh³² into the open mortar bed overlapping 10 cm and level using a smoothing trowel.

Embed the reinforcement mesh so that it is positioned in the middle of the reinforcement layer.

Additionally embed diagonal reinforcement strips or mesh strips (25 x 25 cm) diagonally in the reinforcement in corner areas of building openings.

Consumption

Bonding:

approx. 4,5 - 6,0 kg/m²

Reinforcement:

	approx. 1,4 kg per mm layer thickness per m ² Determine the precise material requirements by means of a trial coating on the object.
Minimum layer thickness of reinforcement	approx. 3 mm
Information about the weather	Temperatures below 3 °C may not arise during application and drying. Do not apply in direct sunlight. In the case of wind, please observe shorter setting times.
Interval	Bonding Depending on the weather conditions, reworkable after 24 h at the earliest. Anchoring and reworking of the insulation boards only after that. Reinforcement Depending on the weather conditions, reworkable after 24 h at the earliest for reworking with mineral textured renders. Depending on the weather conditions, reworkable after 5 days at the earliest for reworking with resin or silicone resin renders.
Drying time	approx. 1 - 3 days. Dependent on temperature and relative humidity.
Cleaning of tools	In a fresh state with water.
Application by machine	Please request special information regarding machine processing.

STORAGE

Dry, protected against moisture, cool, shelf life in original sealed packaging of at least 1 year.

PACKAGING INFORMATION

Colour	Grey
Packaging unit	Paper sack approx. 25 kg net Silo: Upon request

OTHER INFORMATION

Information on safety	The information provided in the current safety data sheet applies.
Transportation	Not a hazardous material
Giscode	ZP1 cement-based products, low in chromate

alsecco GmbH
Kupferstraße 50
D-36208 Wildeck
Phone 03 69 22 / 80-0
Fax 03 69 22 / 88-330
Internet: www.alsecco.de

The above information is based on many years of experience and tests and is provided by us to the best of our knowledge. Such information applies in addition to our application guidelines. However, we cannot accept any responsibility for the correctness of our recommendations on account of wide variety of substrates and of on-site conditions and applications which are outside our control. Any recommendations provided by our employees and deviating from these documents must be given in writing. We reserve right to make any changes on account of technical progress or building regulations. Your technical advisor will be pleased to provide the relevant product data sheets.



Polystyrene Insulation Boards

Polystyrene insulation boards for alsecco external wall insulation systems in accordance with BS EN 13163

Areas of application	Insulation boards for the alsecco external wall insulation systems basic and Alprotect.
PS 15 SE, EPS 70 Facade insulation board (White, Graphite Enhanced)	Insulation boards with square edges for fixing by bonding or bonding and anchoring.
PS 15 SE M facade insulation board, (white, graphite enhanced)	Insulation boards with grooves for mechanical rail-system fixing.

Product properties	<ul style="list-style-type: none"> ■ EPS - BS EN 13163 - T2 - L2 - W2 - S2 - P4 ■ Tensile strength - see technical data below ■ Flameretardant Euro Class E ■ Quality controlled according to BS EN 13163 ■ Dimensionally stable ■ CFC-free, HCFC-free ■ Ozone depletion potential - Zero ■ GWP - <5
--------------------	---

Technical data	Fire Class	BS EN 13501 Euro Class E
Thermal conductivity $\lambda_{90/90}$	PS 15 SE EPS 70 - White	0.037 - 0.038 W/(mK)
	PS 15 SE EPS 70 - Graphite enhanced	0.030-0.032 W/(mK)
	PS 15 SE M EPS 70 - White	0.037 - 0.038 W/(mK)
	PS 15 SE M EPS 70 - Graphite enhanced	0.030-0.032 W/(mK)
Dimensions	PS 15 - White	Upto 1200mm x 600 mm
	PS 15 - Graphite enhanced	Upto 1200mm x 600mm
	PS 15 SE M EPS 70 - White	500mm x 500mm
	PS 15 SE M EPS 70 - Graphite enhanced	500mm x 500mm

Technical data	Tensile strength at right angles to board (to BS EN 13163)	PS 15 white	≥ 100 kPa
		PS 15 graphite enhanced	≥ 100 kPa
		PS 15 M white	≥ 150 kPa
		PS 15 M graphite enhanced	≥ 150 kPa
	Water vapour diffusion resistance μ	20/40 in accordance with DIN EN 13163	

Application instructions	Preparation	The PS 15, graphite enhanced facade insulation boards have to be protected against strong sunlight during storage and installation. (Do not leave them out in the sun, take suitable measures to shade the applied insulation boards and do not leave them exposed for longer than necessary without a covering reinforcing layer.)
	Substrate pre-treatment	Pre-treat substrates in accordance with the application guidelines for the adhesives.
	Application	<p>Fixing in bonded or bonded and mechanically fixed systems:</p> <ul style="list-style-type: none"> - Select the system's appropriate adhesive mortar for the substrate and fix using the spot-and-bead method. The adhesive must cover at least 50 % of the area. - If the substrate is even, the adhesive may be applied using a notched trowel. - Push the insulation boards so that they abut. - Keep the horizontal and vertical joints between the boards free from adhesive. - The boards are installed with the vertical joints staggered by at least 10 cm. The insulation material must be dovetailed at the corners of the building.

Application instructions	Application	
	<ul style="list-style-type: none"> - The butt joints of insulation boards must not be positioned above the areas where different components meet (e.g. ring beams, shutter boxes, structural joints). The insulating materials should extend at least 10 cm beyond such areas, without a joint, and be securely bonded to both sides. - Open joints between insulation boards measuring < 0.5 cm should be sealed with Filling Foam B1, while large joints should be sealed with strips of insulating material. - If the substrates are suitable for adhesive, additional structural anchors may be inserted as required. - If the substrates are not suitable for adhesive, anchors must be inserted in accordance with the general building inspectorate approval for exterior wall insulation systems. <p data-bbox="639 696 1023 725">Mechanical fixing using the rail system</p> <ul style="list-style-type: none"> - Apply spots of adhesive to achieve a 20 % bond. - Fix the insulation boards to the substrate using Profile H rails. - Slide the Profile V in vertically to provide an additional connection between the insulation boards. - Push the insulation boards so that they abut. - Open joints between insulation boards measuring < 0.5 cm should be sealed with PU Foam Filler, while large joints should be sealed with strips of insulating material. - If required insert additional anchors to fix the insulation boards in accordance with the general building inspectorate approval for exterior wall insulation systems. <p data-bbox="639 1207 815 1236">Subsequent work</p> <ul style="list-style-type: none"> - Sand down any unevenness and remove the dust generated (see brochure on application of exterior wall insulation systems). 	
	Please note:	<p data-bbox="639 1368 1433 1429">Unrendered insulation boards attached to the façade must be protected against moisture and coated with reinforced base-coat plaster as soon as possible.</p> <p data-bbox="639 1449 1091 1476">Damaged insulation boards must not be installed.</p>
Packaging	Packaging unit	See current range of products
Other information	Transport	Not a hazardous product
	Storage	Dry, protected against moisture and sunlight.

alsecco (UK) Ltd

Whitebridge Way

Stone, Staffs ST15 8JS

Tel: 01785 818998 Fax: 01785 818144

Email: info@alsecco.co.uk

www.alsecco.co.uk

The above information is based on many years of experience and tests and is provided by us to the best of our knowledge. Such information applies in addition to our application guidelines. However, we cannot accept any responsibility for the correctness of our recommendations on account of wide variety of substrates and of on-site conditions and applications which are outside our control. Any recommendations provided by our employees and deviating from these documents must be given in writing. We reserve right to make any changes on account of technical progress or building regulations. Your technical advisor will be pleased to provide the relevant product data sheets.

PD 0219/0713

Mesh

Detail mesh for alsecco external wall systems

Areas of application

Detail mesh in base coat plasters.

Alsitex Nova	Non-slip and alkali-resistant for embedding in layer of render made from: Armatop Nova
--------------	---

Alsitex Carbon	Non-slip and alkali-resistant for embedding in layer of render made from: Armatop Carbon Armatop Solid Carbon
----------------	---

Mesh Quattro	Non-slip for embedding in layer of render made from: Armatop Quattro
--------------	---

Mesh universal - Aero	Non-slip and alkali-resistant for embedding in layer of render made from: Litewall ANB Litewall ANB F Alsitop Alsitop F Base Coat W Armatop A Armatop L - Aero Armatop Solid Carbon
-----------------------	---

Mesh 32	Non-slip and alkali-resistant for embedding in layer of render made from: Armatop MP Armatop MP white Armatop Base Armatop A Armatop AKS Armatop por Two in One Armatop Quattro Armatop Carbon Armatop Solid Carbon
---------	---

Mesh K	Non-slip and alkali-resistant for embedding in layer of render made from: Armatop L - Aero Armatop A For use when ceramics are used for the surface design.
--------	--

Panzer Mesh	Mesh used to prepare highly impact-resistant reinforcing layers. Used in conjunction with Mesh 32 or universal - Aero.
-------------	---

Technical data	Weight per unit area		
		Alsitex Nova:	approx. 160 g/m ²
		Alsitex Carbon:	approx. 160 g/m ²
		Mesh Quattro:	approx. 105 g/m ²
		Mesh universal - Aero:	approx. 160 g/m ²
		Mesh 32:	approx. 160 g/m ²
		Mesh K:	approx. 160 g/m ²
		Panzer mesh:	approx. 330 g/m ²
		<hr/>	
	Mesh size		
		Alsitex Nova:	approx. 4 x 4 mm ²
		Alsitex Carbon:	approx. 4 x 4 mm ²
		Mesh Quattro:	approx. 4 x 4 mm ²
		Mesh universal - Aero:	approx. 6 x 6 mm ²
		Mesh 32:	approx. 4 x 4 mm ²
		Mesh K:	approx. 3.5 x 3.5 mm ²
		Panzer Mesh:	approx. 6 x 6 mm ²
		<hr/>	
	Tensile strength		
		Alsitex Nova	warp: ≥ 2000 N/5 cm weft: ≥ 2000 N/5 cm
		Alsitex Carbon	warp: ≥ 2000 N/5 cm weft: ≥ 2000 N/5 cm
		Mesh Quattro	warp: ≥ 1820 N/5 cm weft: ≥ 1430 N/5 cm
		Mesh universal - Aero	warp: ≥ 2000 N/5 cm weft: ≥ 2000 N/5 cm
		Mesh 32	warp: ≥ 2000 N/5 cm weft: ≥ 2000 N/5 cm
		Mesh K	warp: ≥ 2000 N/5 cm weft: ≥ 2000 N/5 cm
		Panzer mesh	warp: ≥ 3200 N/5 cm weft: ≥ 3500 N/5 cm

Application instructions	Application	Alsitex Nova, Carbon, Mesh Quattro, universal - Aero, 32, K	
		<ul style="list-style-type: none"> - Embed mesh in the wet reinforcing compounds horizontally or vertically and smooth over. The length of mesh should overlap by at least 10 cm at the ends. - Embed the mesh in the upper third of the reinforcing compound or the plaster and cover completely with reinforcing compound. 	
		Panzer Mesh	
		<ul style="list-style-type: none"> - Place the mesh horizontally or vertically in the open reinforcing compound pushed close together and smooth over with a trowel. - Cover with the system-specific mesh. - Embed the mesh in the upper third of the reinforcing compound or the plaster and cover completely with reinforcing compound. 	
	Consumption	Alsitex Nova, Carbon, Mesh Quattro, universal - Aero, 32, K:	approx. 1,1 m ² /m ²
		Panzer Mesh:	approx. 1.0 m ² /m ²
Packaging	Packaging unit	Alsitex Nova, Carbon, Mesh universal - Aero, 32, K:	Rolls 1,10 m wide , 50 m long
		Mesh Quattro:	Rolls 1,10 m wide , 75 m long
		Panzer Mesh:	Rolls 1 m wide, 25 m long
	Colour	White (Mesh Quattro, universal - Aero, 32, K, Panzer Mesh) Grey (Alsitex Carbon) Red (Alsitex Nova)	

Klebespachtel AF - (Bedding Mortar AF)

Adhesive and joint filler for flat facing bricks



AREAS OF APPLICATION

Organic adhesive and joint render for the bonding and pointing of flat facing bricks. Application of flat facing bricks with organic external render according to DIN EN 15824.

PRODUCT PROPERTIES

- Strong adhesive power
- Highly elastic
- Water-repellent
- Water-vapour permeable
- A2-s1, d0 (Fireproof) according to DIN EN 130501 in connection with flat facing bricks

TECHNICAL DATA

Specific gravity	approx. 1,74 g/cm ³
Diffusion-equivalent air-layer thickness	s _d : approx. 0,33 m according to DIN EN ISO 7783
Water permeability	w: approx. 0,04 kg/(m ² h ^{1/2}) according to DIN EN 1062-3
Fire behavior	A2-s1, d0 according to DIN EN 13501-1

APPLICATION INSTRUCTIONS

Preparation	<p>Evenly divide the surfaces to be laid with continuous height markings (chalk line), to define work steps.</p> <p>For a normal format (NF), a work step has a height of approx. 33 cm (4 veneer layers each 71 mm and 4 bed joints each 12 mm).</p> <p>For thin size (DF), a work step has a height of approx. 32 cm (5 veneer layers each 52 mm and 5 bed joints each 12 mm).</p> <p>Observe fixed lines when calibrating (e.g. windows, doors, brick-on-end courses, etc.)</p>
Substrate pre-treatment	All substrates must be stable, level, clean, dry and free of any residue, which can

	reduce adhesiveness.
Mixing	Ready to use Stir using an electric mixer or if applicable, with a small amount of water, to obtain a workable consistency.
Application	Apply adhesive filler AF to the completed, hardened reinforcement layer in strips within the created height markings using a trowel and horizontally comb through with a notched trowel (notch size 4 x 6 mm). Only apply as much adhesive filler AF as can be faced with flat facing bricks before skin formation. Press alsecco flat facing bricks into the still open adhesive filler AF with thrusting movements and with the respective distance between the joints, so that no cavities form. In the process, it is recommended to work from top to bottom and to start with the corner facing bricks. Evenly coat the still open adhesive in the joint area with a wet 10 mm flat brush and fit the sides of the bricks in a manner, which ensures a compact connection between adhesive filler and the flat facing bricks. Then, brush off the surface using a hand brush or the like, to remove loose particles of mortar.
Consumption	ca. 2,5 - 3,0 kg/m ² Determine the precise material requirements by means of a trial coating on the object.
Information about the weather	There cannot be temperatures below + 5 °C during application and drying. Do not work on surfaces, which have heated up due to sunlight, or during rain and severe winds.
Drying time	approx. 24 - 72 hours Dependent on temperature and relative humidity.
Cleaning of tools	In a fresh state with water.

STORAGE

Shelf life in original sealed packaging of at least 1 year when kept cool and protected against frost.

PACKAGING INFORMATION

Packaging unit PP bucket approx. 25 kg net

OTHER INFORMATION

Information on safety	The information provided in the current safety data sheet applies.
Transportation	Not a hazardous material
Giscode	D2 low solvent dispersion installation products, free of aromatic compounds

alsecco GmbH
Kupferstraße 50
D-36208 Wildeck
Phone 03 69 22 / 88-0
Fax 03 69 22 / 88-330
Internet: www.alsecco.de

The above information is based on many years of experience and tests and is provided by us to the best of our knowledge. Such information applies in addition to our application guidelines. However, we cannot accept any responsibility for the correctness of our recommendations on account of wide variety of substrates and of on-site conditions and applications which are outside our control. Any recommendations provided by our employees and deviating from these documents must be given in writing. We reserve right to make any changes on account of technical progress or building regulations. Your technical advisor will be pleased to provide the relevant product data sheets.



ORIGINAL MELDORFER®

Decorative brick effect finish and individual designs for
alsecco façade systems

AREAS OF APPLICATION

Can be installed on ETIC systems, curtain façades and on exterior and interior mineral plaster and render.

PRODUCT PROPERTIES

- Wide range of design options, from traditional brick effect to individual artistic concepts
- Handmade from high quality raw materials
- Superior resistance and durability
- Slim build-up (approx. 8 mm incl. adhesive)
- Low weight
- A2-s1, d0 (fireproof) according to DIN EN 13501-1

TECHNICAL DATA

Diffusion-equivalent air-layer thickness	< 1,4 according to DIN EN ISO 7783
Resistance against the diffusion of water vapour	$s_d < 1,4$ m Klasse V ₂ according to DIN EN 15824
Water permeability	$w: \leq 0,1$ kg/(m ² h ^{1/2}) according to DIN EN 1062-3 Klasse W ₃ (low) according to DIN EN 15824
Weight	approx. 5 kg/m ²

APPLICATION INSTRUCTIONS

Preparation

Since there are slight variations in the colour effect and dimensional tolerances of Original Meldorf brick slips, they should be randomly mixed when taken from the packaging rather than installed one layer at a time.

The areas where the brick slips are to be applied must be divided evenly by marking the appropriate height with a continuous chalk line to define the individual steps.

The standard format (Normalformat = NF) has a working section of 32 cm in height

(4 layers of slips at 71 mm each and 4 horizontal joints at 12 mm each).

The thin format (Dünnformat = DF) has a working section of 30.8 cm in height (5 layers of slips at 52 mm each and 5 horizontal joints at 12 mm each).

The long format (Langformat = LF) has a working section of 30 cm in height



(6 layers of slips at 40 mm each and 5 horizontal joints at 12 mm each).

The extra-long format (XL-Longformat = XLF) has a working section of 30.8 cm in height

(5 layers of slips at 52 mm each and 4 horizontal joints of 12 mm each).

The large format (Grossformat = GF) has a working section of 31.2 cm (1 layer of slips at 300 mm and 1 horizontal joint at 12 mm).

A notched trowel with 6 x 6 mm notches should be used for this format.

The sandstone multi-format (Multiformat = MF) has a working section of 29.4 cm (when installing three different sizes of slips in three courses and three horizontal joints at 12 mm each).

When dividing up the sections, fixed lines (e.g. windows, doors, edge courses etc.) must be taken into account for the measurements.

Substrate pre-treatment

All substrates must be stable, level and free of any residue, which can reduce adhesiveness.

Application

Ribbons of Bonding Mortar AF are trowel-applied to the finished and hardened reinforcement coat within the height markings. These ribbons are then combed through with a notched trowel (notch size 4 x 6 mm) in the direction of installation. A trowel with notch size 6 x 6 mm should be used for installing large-format Meldorfer brick slips.

Only ever apply as much Bonding Mortar AF as can be covered with Original Meldorfer brick slips before a skin is formed.

Original Meldorfer brick slips must be floated into the Bonding Mortar AF within the mortar's pot life, keeping to the appropriate joint widths and making sure that there are no cavities underneath. The best option is to work from the top down, starting with the corner slips.

Use a wet and flat 10 mm brush to smooth over the mortar in the joints during its pot life, bringing it right up to the edges of the slips to ensure a waterproof bond between the mortar and the Original Meldorfer brick slips.

Finally clean the surface with a hand brush or similar to remove loose remnants of mortar.

Consumption

Format		Consumption units/m	Consumption of corner slips units/m
Thin format	DF	64	16
Standard format	NF	48	12
Long format	LF	47	20
Extra-long format XL	XLF	20	
Large format	GF	6	
Sandstone multi-format	MF	Order-specific, depending on the combination of the three formats	

Information about the weather

There cannot be temperatures below + 5 °C during application and drying.

Do not work on surfaces, which have heated up due to sunlight, or during rain and severe winds.

Drying time approx. 24 - 72 hours
Dependent on temperature and relative humidity.

Information If the substrate is dense and cool or if the drying process is delayed due to adverse weather conditions, the effect of moisture (rain, dew, mist) can cause additives to rise to the surface of the coating. The effect is dependent on the intensity of the colour. These additives are water-soluble and are automatically removed with sufficient water, e. g. in the course of further weather. This does not impair the quality of the dried coating.

STORAGE

Dry, protected against moisture and sunlight.

PACKAGING INFORMATION

Colour

- Altweiß (NF, DF)
- Antik (NF, DF)
- Brandenburg (NF, DF)
- Dithmarschen (NF, DF)
- Friesland (NF, DF)
- Juist (NF, DF)
- Mecklenburg (NF, DF)
- Oldenburg (NF, DF)
- Rotbunt (NF, DF)
- Sandstein (MF)
- Sylt (NF, DF)
- Westerwald (NF)
- Hamburg (NF, DF)
- Oslo (LF)
- Stockholm (LF)
- Kopenhagen (LF)

ORIGINAL MELDORFER® brick slips are hand-crafted and manufactured individually. Please be aware of colour variations and dimensional tolerances.

Formats

Formats		Deminsions (L x H) mm	Corner slips 3/4 mm Corner with half bat and 3/4 stretcher	Corner slips 4/4 mm Corner with half bat and full stretcher
Thin format	DF	240x52	175x115x52	240x115x52
Standard format	NF	240x71	175x115x71	240x115x71
Long format	LF	400x40		240x105x40



Extra-long format XL	XLF	740x52	
Large format	GF	600x300	
Sandstone multi-format	MF	300x52	240x115x52
		300x71	240x115x71
		300x135	240x115x135

OTHER INFORMATION

Transportation

Not a hazardous material

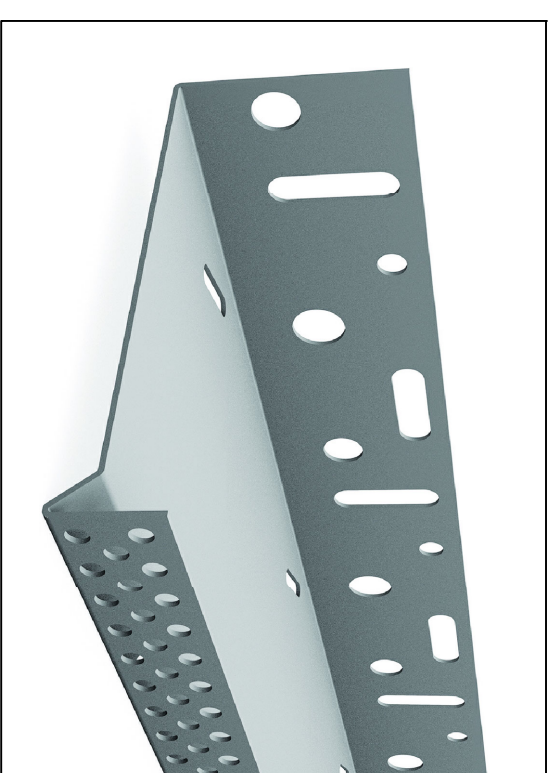
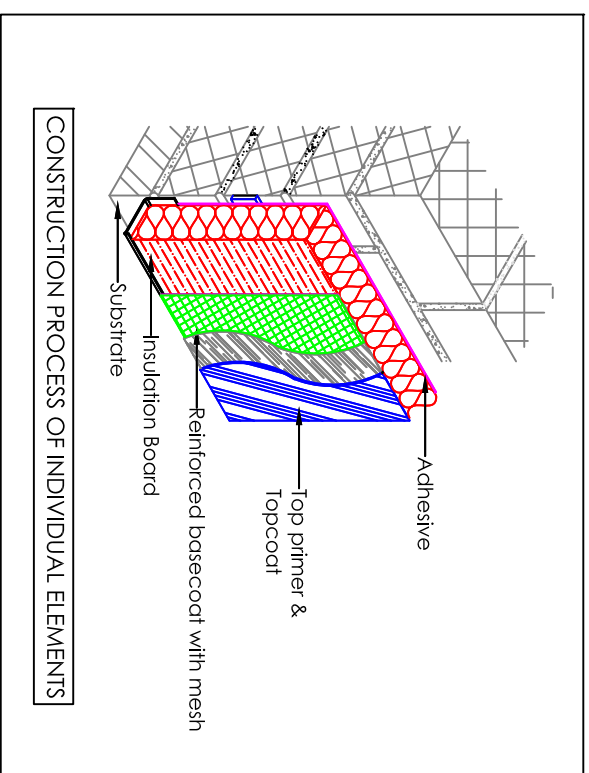
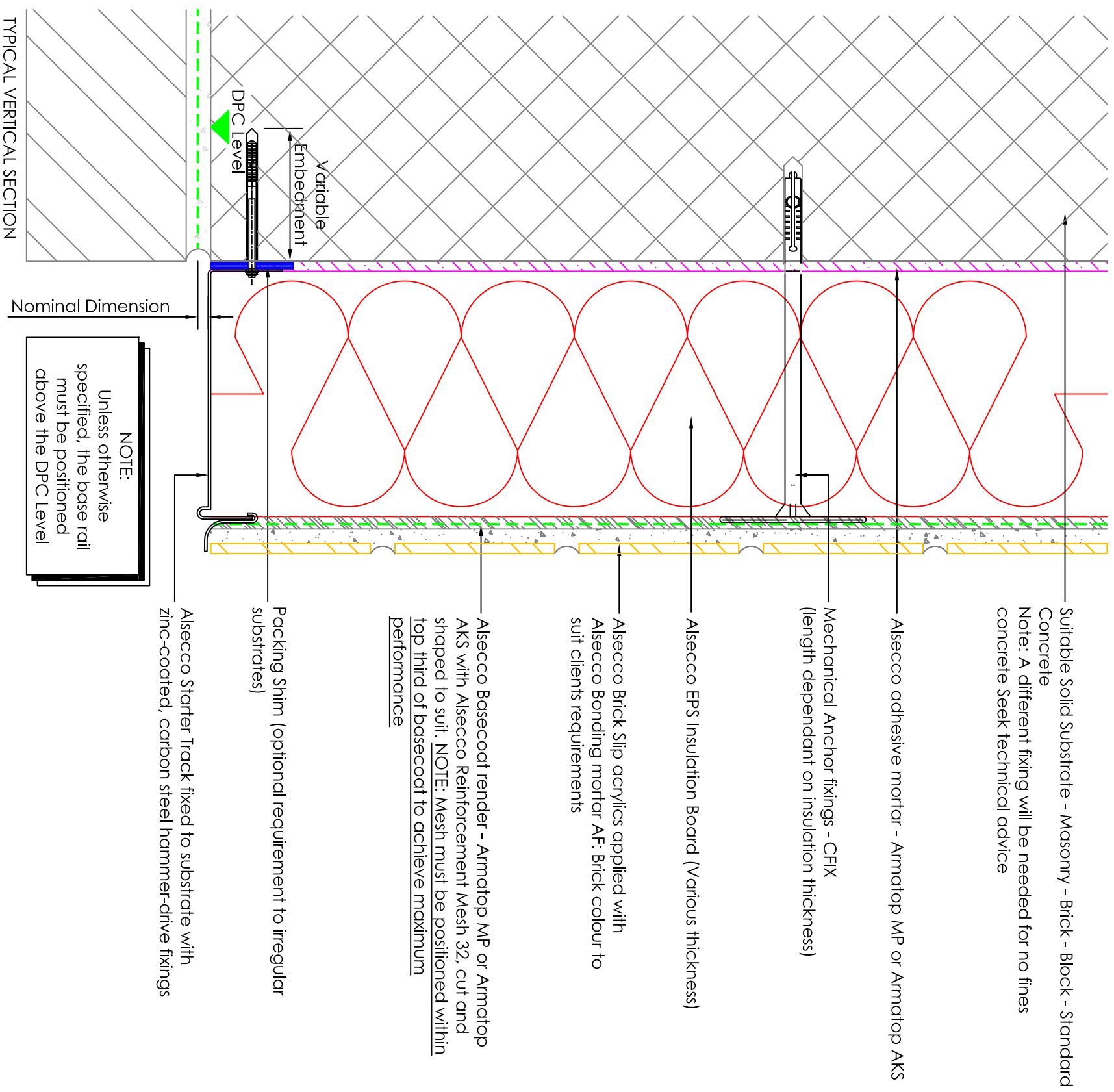
Waste code

Type	Waste code
New products:	20 03 01: mixed municipal waste
Used products:	17 09 04: mixed construction and demolition wastes other than those mentioned in 17 09 01, 17 09 02 and 17 09 03

alsecco GmbH
 Kupferstraße 50
 D-36208 Wildeck
 Phone 03 69 22 / 88-0
 Fax 03 69 22 / 88-330
 Internet: www.alsecco.de

The above information is based on many years of experience and tests and is provided by us to the best of our knowledge. Such information applies in addition to our application guidelines. However, we cannot accept any responsibility for the correctness of our recommendations on account of wide variety of substrates and of on-site conditions and applications which are outside our control. Any recommendations provided by our employees and deviating from these documents must be given in writing. We reserve right to make any changes on account of technical progress or building regulations. Your technical advisor will be pleased to provide the relevant product data sheets.





Standard details are indicative only and must be read in conjunction with the specification, BBA certification and other relevant approvals and standards

Property of alsecco_uk may not be reproduced or amended without written permission. No liability will be accepted for amendments made by persons other than alsecco.

The Contractor is to check and verify all building and site dimensions, before work commences.

The Contractor is to comply in all respects with current Building Legislation, British Standards, Building Regulations etc, whether or not specifically stated on this drawing.

This drawing is not intended to show details of foundations, ground conditions or ground contaminants.

Notes

- Details with a red light attributed present areas that are not fully insulated and as such can lead to a thermal bridge. In some cases these thermal bridges are caused by pipe outlets or existing penetrations such as balconies that are unavoidable. The detail should be considered in the context of the property and current ventilation by the EEM Designer

Revisions Date Amendment Name

Revisions	Date	Amendment	Name
1:30 - 0			
1:30 - 0			
1:30 - 0			



Whitebridge Way | Stone | Staffordshire | ST15 8JS
T 01785 818 998 F 01785 818 144
E technical@alsecco.co.uk W www.alsecco.co.uk

Client: STANDARD DETAILS

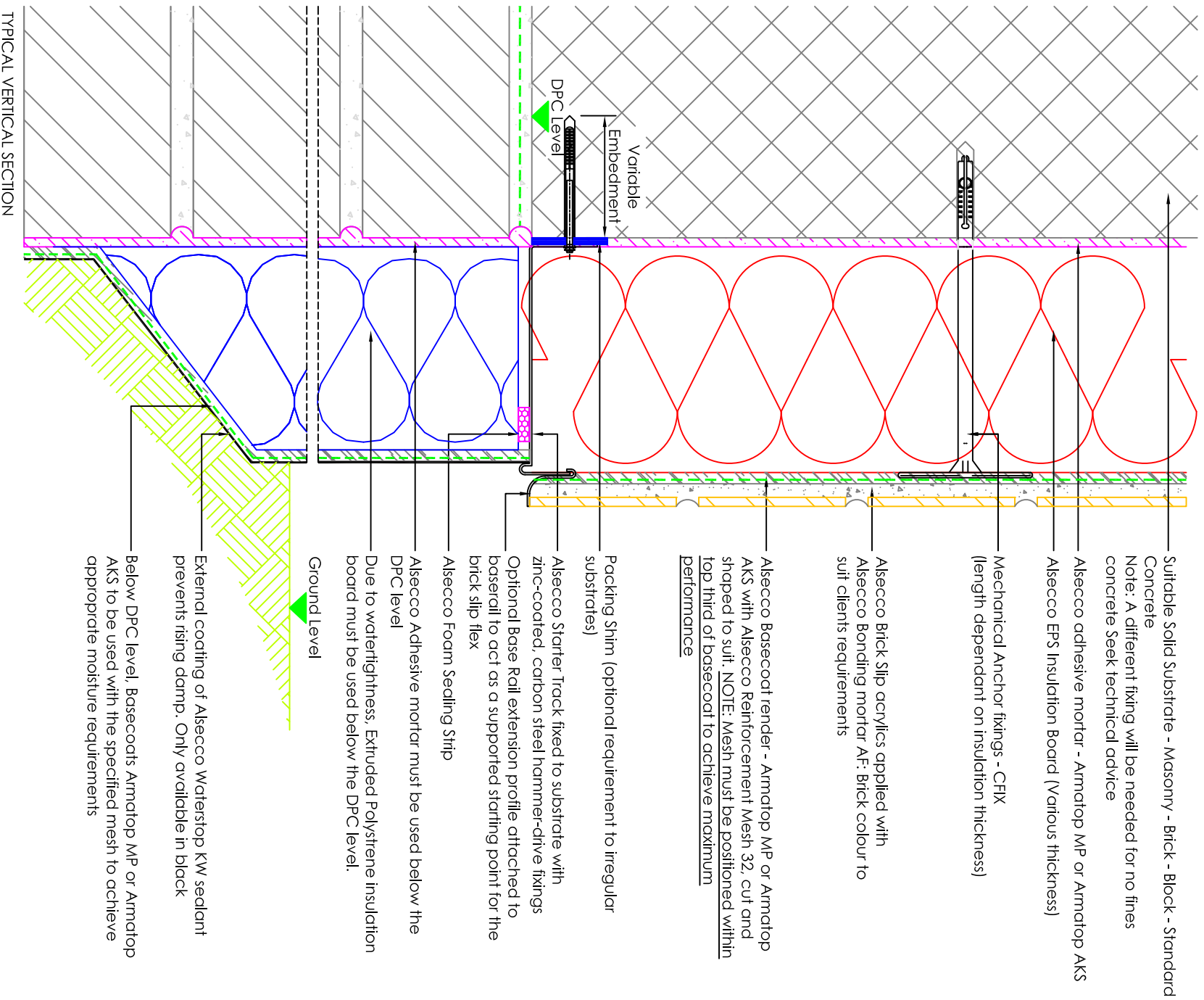
Project: STANDARD DETAILS

Title: BASE RAIL DETAIL

Status: Construction Checked: MFR

Drawn: SJG Date: 01/01/2019 Scale: 1:2 @A3

Job No: 0000000 Dwg No: LR-BASAA-SOL-001 Rev:



Standard details are indicative only and must be read in conjunction with the specification, BBA certification and other relevant approvals and standards

Property of alsecco.uk may not be reproduced or amended without written permission. No liability will be accepted for amendments made by persons other than alsecco.

The Contractor is to check and verify all building and site dimensions, before work commences.

The Contractor is to comply in all respects with current Building Legislation, British Standards, Building Regulations etc, whether or not specifically stated on this drawing.

This drawing is not intended to show details of foundations, ground conditions or ground contaminants.

- Notes**
- Details with a green light attributed fully insulate the thermal path through the external wall construction and provide a high level of confidence that condensation will not occur at this detail junction as a result of the application of the EMI system - the detail should still be considered in the context of the property and current ventilation by the EMI Designer.

Revisions	Date	Amendment	Name
1:30 - 0			
1:100 - 0			
1:50 - 0			
1:5 - 0			

For guidance only, Do not scale off this drawing



Whitebridge Way | Stone | Staffordshire | ST15 8JS
 T 01785 818 998 F 01785 818 144
 E technical@alsecco.co.uk W www.alsecco.co.uk

Client: STANDARD DETAILS

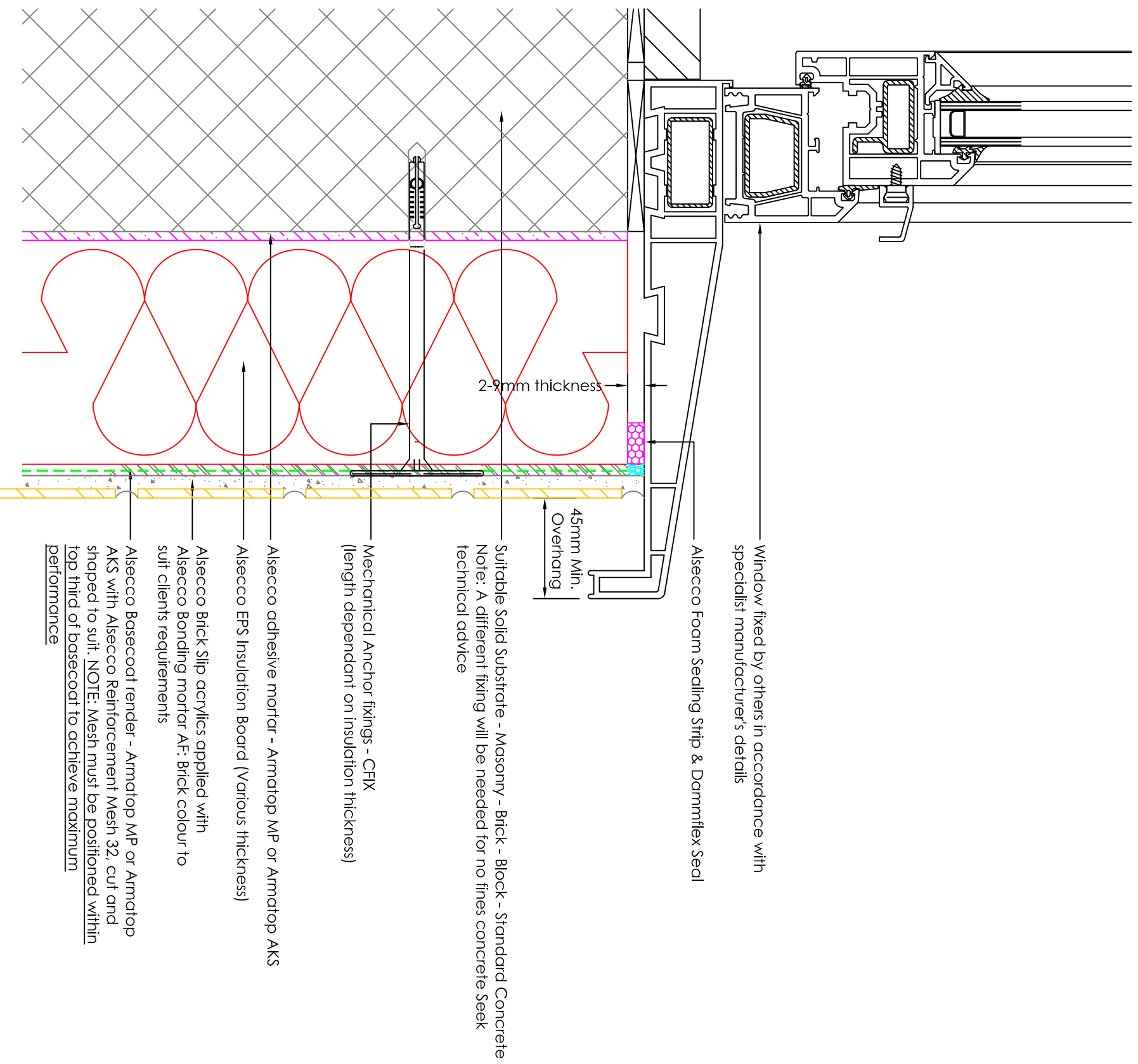
Project: STANDARD DETAILS

Title: BELOW DPC DETAIL

Status: Construction Checked: MFR

Drawn: SJG Date: 01/01/2019 Scale: 1:2 @A3

Job No: 0000000 Dwg No: LR-BASA-SOL-002 Rev:



Standard details are indicative only and must be read in conjunction with the specification, BBA certification and other relevant approvals and standards

Property of asecco.uk, may not be reproduced or amended without written permission.

No liability will be accepted for amendments made by persons other than asecco.

The Contractor is to check and verify all building and site dimensions, before work commences.

The Contractor is to comply in all respects with current Building Legislation, British Standards, Building Regulations etc, whether or not specifically stated on this drawing.

This drawing is not intended to show details of foundations, ground conditions or ground contaminants.

Notes

Details with a red light attributed present areas that are not fully insulated and as such can lead to a thermal bridge. In some cases these thermal bridges are caused by pipe outlets or existing penetrations such as balconies that are unavoidable. The detail should be considered in the context of the property and current ventilation by the EBM Designer

Revisions	Date	Amendment	Name
1:30 - 0			
1:100 - 0			
1:50 - 0			
1:5 - 0			

For guidance only, Do not scale off this drawing



Whitebridge Way | Stone | Staffordshire | ST15 8JS
 T 01785 818 998 F 01785 818 144
 E technical@asecco.co.uk W www.asecco.co.uk

Client: STANDARD DETAILS
Project: STANDARD DETAILS

Title: WINDOW CILL DETAIL

Status: Construction Checked: MFR
 Drawn: SJG Date: 01/01/2019 Scale: 1:2 @A3

Job No: 0000000 Dwg No: LR-BASA-SOL-003 Rev: